

SWISSINT

www.swissint.com

Wiping and live performance equal to high quality OE Wiper



Where to sell – what to sell ?

Garages, Workshops

1 Carton (40 Stk.) Art. Nr. PKW 63610 610mm

1 Carton (20 Stk.) Art. Nr. PKW 63750 750 mm

1 Carton (20 Stk.) Art. Nr. AT 750 750 mm —> (New Generation for: Mercedes, VW, Audi, BMW, Fiat, Alfa, Porsche, Kia, Honda, Nissan, Renault, Ford, Seat, Skoda, Mazda, Volvo, Peugeot, Citroen)

Tyre service & window repairs

1 Carton (40 Stk.) Art. Nr. PKW 63610 610 mm

1 Carton (20 Stk.) Art. Nr. PKW 63750 750 mm

1 Carton (20 Stk.) Art. Nr. AT 750 750 mm —> (New Generation for: Mercedes, VW, Audi, BMW, Fiat, Alfa, Porsche, Kia, Honda, Nissan, Renault, Ford, Seat, Skoda, Mazda, Volvo, Peugeot, Citroen)

Rural & building machines

1 Carton (40 Stk.) Art. Nr. PKW /TRUCK 63610 610 mm

1 Carton (20 Stk.) Art. Nr. CAR / TRUCK 85750 750 mm

Truck, transport & cargo

1 Carton (40 Stk.) Art. Nr. PKW /TRUCK 63750 750 mm 90%

1 Carton (20 Stk.) Art. Nr. LKW 85750 750 mm 10%

Bus companies

1 Karton (20 Stk.) Art. Nr. LKW 1050 1050 mm

SWISSINT

www.swissint.com

SWISSINT-Refill Fitting instruction for Metal Wiper Blades



1. Remove the old rubber from the Wiper Blade.



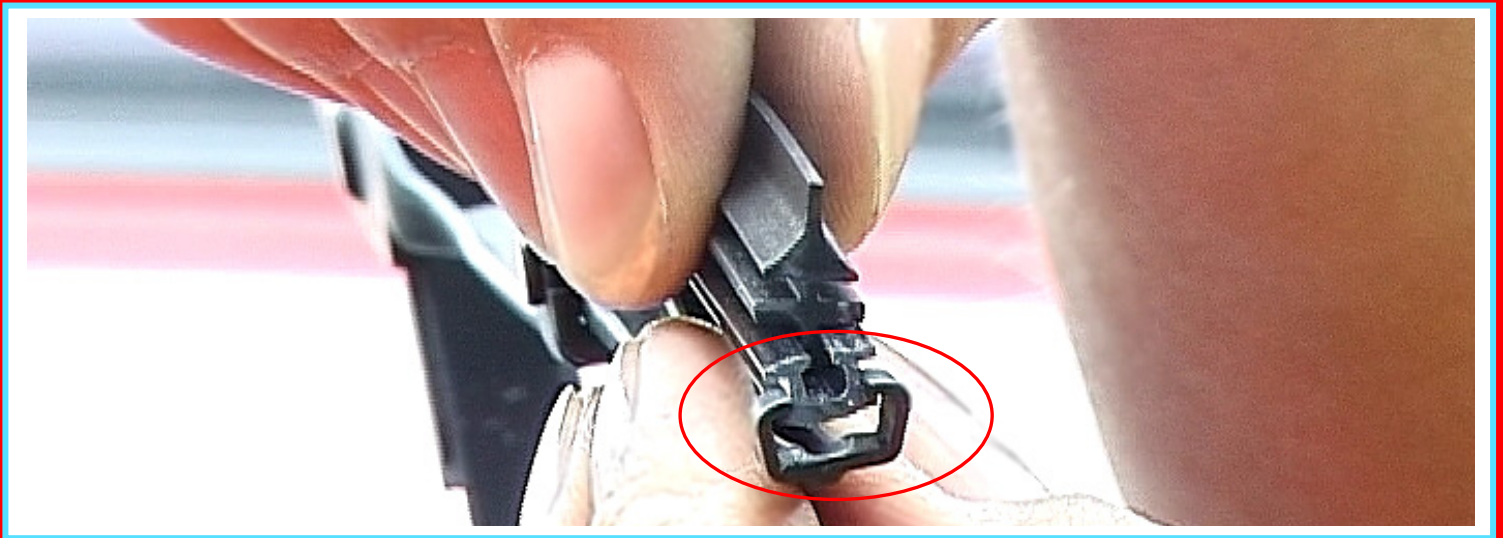
2. Slide the fitting tool through the metal claws to get the exact measurement.



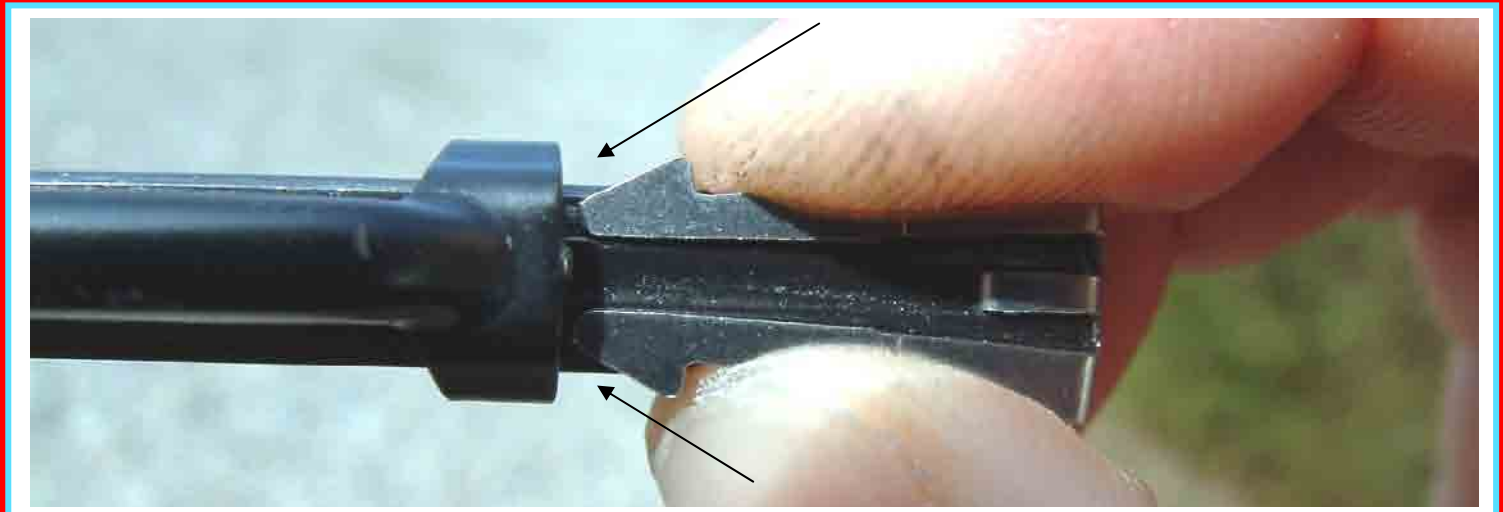
SWISSINT

www.swissint.com

3. Slide the Refill in properly,



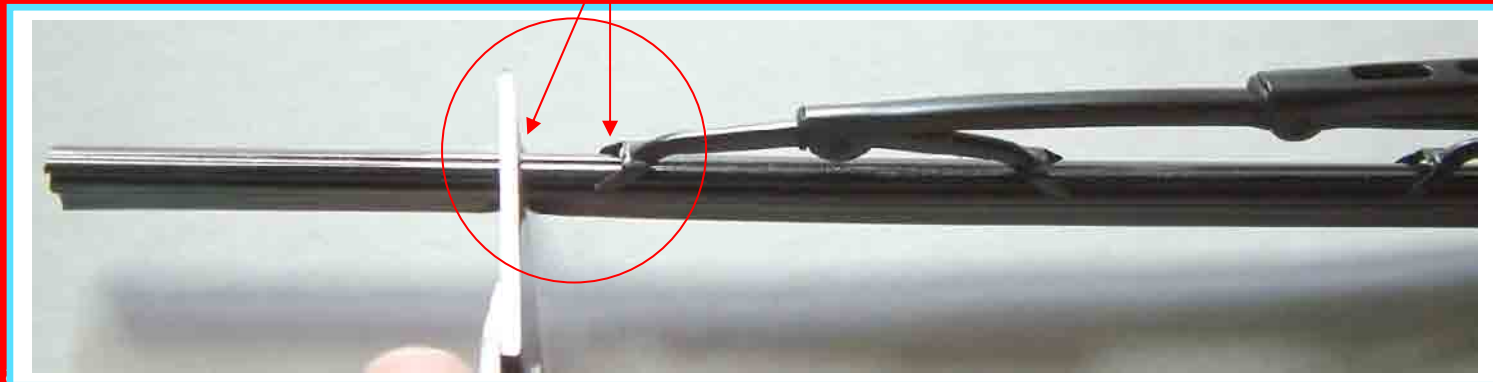
until the clip snaps into position



SWISSINT

www.swissint.com

4. Cut off over length (approx. 1.5 cm after last claw)



We don't remove the Wiper Blades from the car, we replace it on the car! - Approx. 90 % are Metal Frame Blades on the market.

With the SWISSINT Click System, Refills are replaced in the same time or even faster, then complete Wiper Blades.



SWISSINT

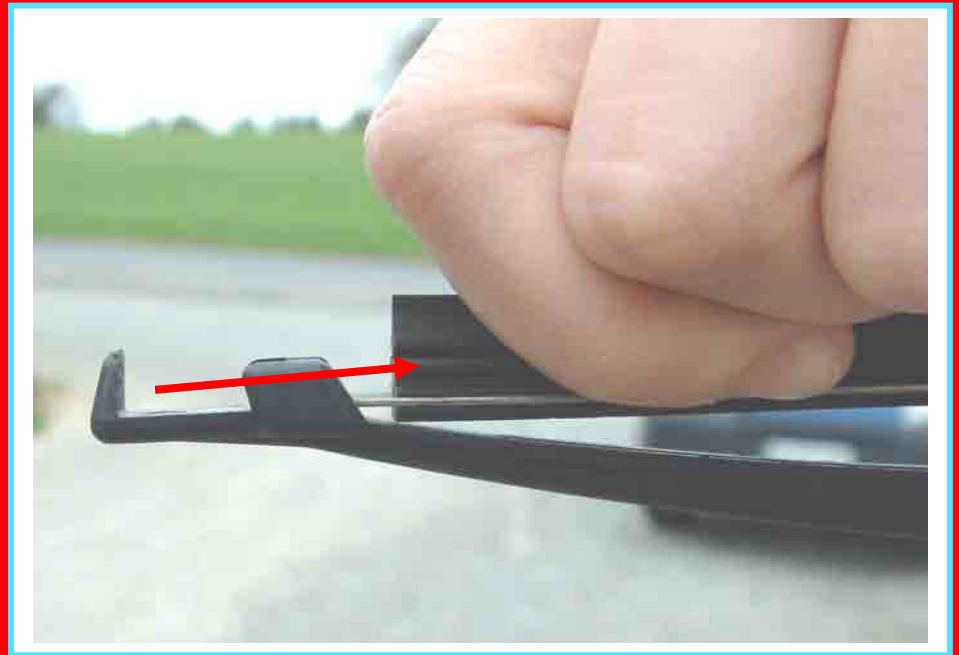
www.swissint.com

SWISSINT-Refill

Fitting instruction for Champion or rear window Wiper Blades



1. Pull the old Rubber back and take it out of the frame.



Those Wiper Blades are closed on both sides.



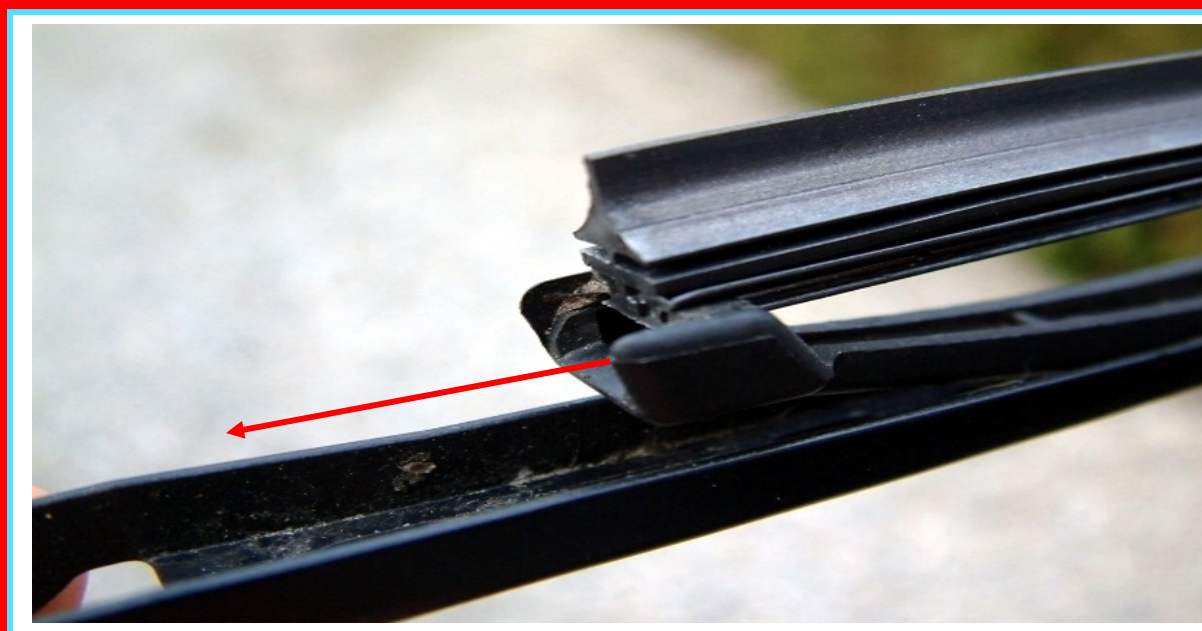
SWISSINT

www.swissint.com

2. Cut off the clip on the Refill, or take it out with pliers.



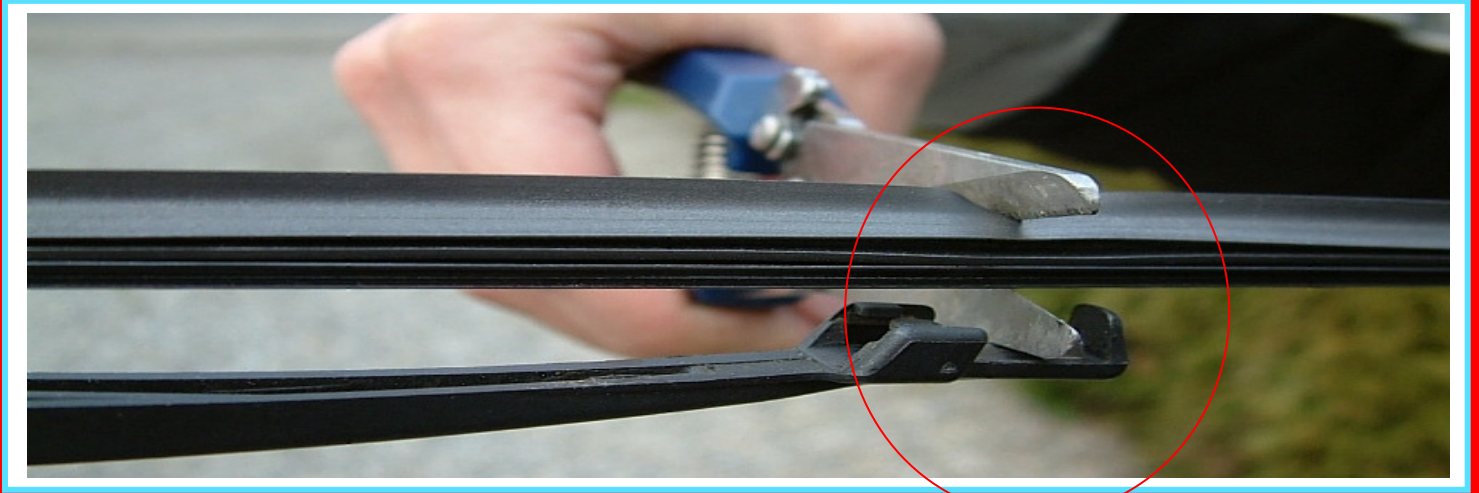
3. Start sliding in the Refill on the side where you've cut off the clip. – Push the Refill through the claws until the end of the Wiper Blade.



SWISSINT

www.swissint.com

4. Cut off over length.



5. Lift and bend the Refill – slide it into the last claw. (that's it!!)



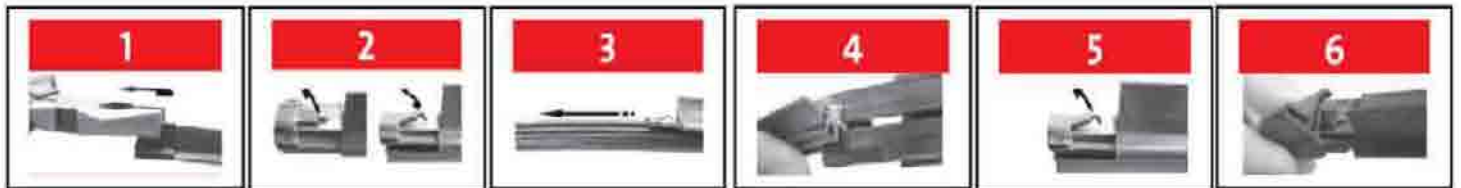
SWISSINT

www.swissint.com

Refills for Flatblades



Remove cap



Do not remove the cap, (Champion and retrofit)



New Rear-Wiper →

